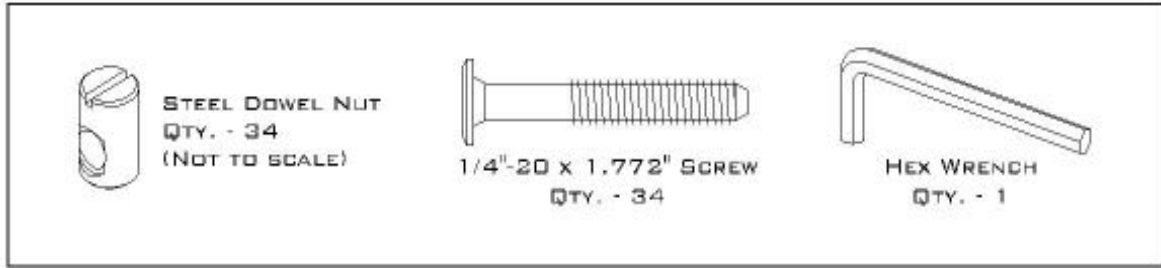
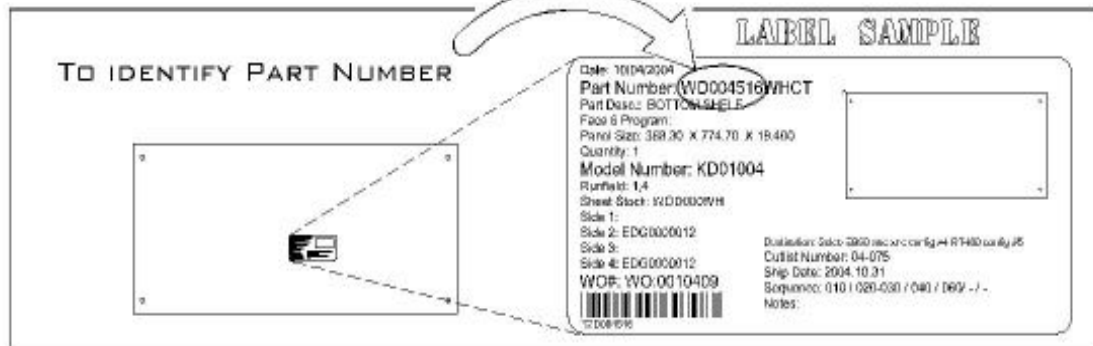


# benee's Storage Unit - Model # KD1004

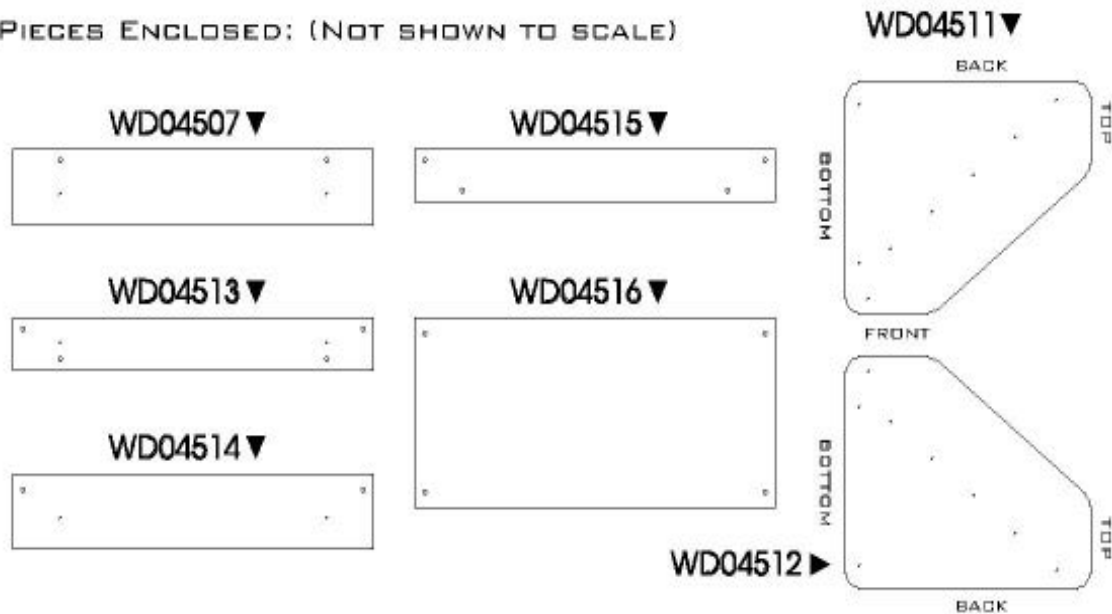
## HARDWARE / TOOLS



**NOTE: DO NOT USE A POWER SCREWDRIWER OR A POWER DRILL TO TIGHTEN SCREWS**



## PIECES ENCLOSED: (NOT SHOWN TO SCALE)



Part #	Part Desc.	Qty.
WD04507	Vertical Divider	4
WD04511	Right Side	1
WD04512	Left Side	1
WD04513	Shelf	4

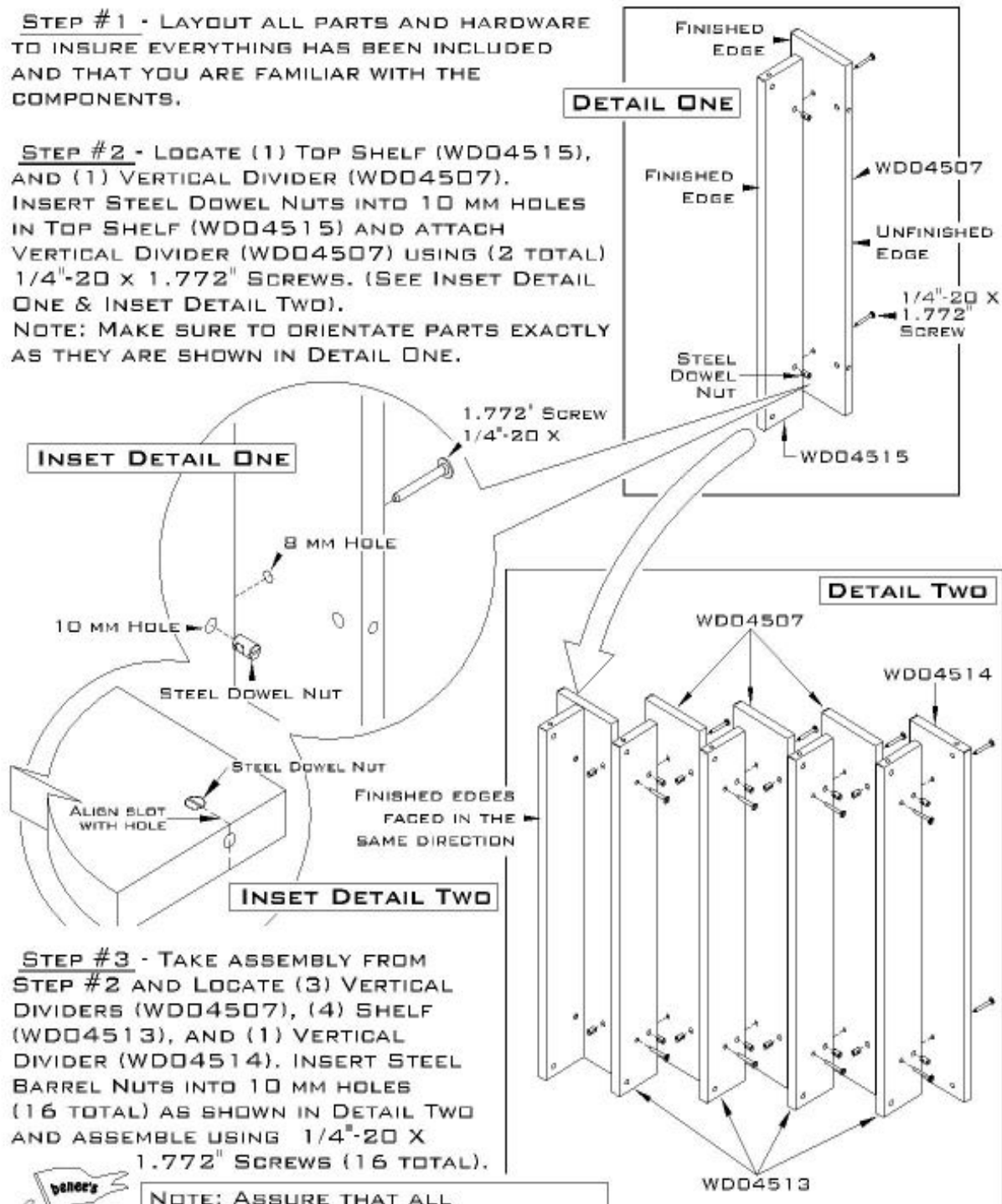
Part #	Part Desc.	Qty.
WD04514	Vertical Divider	1
WD04515	Top Shelf	1
WD04516	Bottom Shelf	1



INSPECT ALL PARTS FOR FREIGHT DAMAGE. IF DAMAGE IS DISCOVERED, AND IT WAS NOT NOTED ON THE BILL OF LADING AT THE TIME OF DELIVERY, PLEASE CALL **benes's** AT 1-800-854-1411.

**STEP #1** - LAYOUT ALL PARTS AND HARDWARE TO INSURE EVERYTHING HAS BEEN INCLUDED AND THAT YOU ARE FAMILIAR WITH THE COMPONENTS.

**STEP #2** - LOCATE (1) TOP SHELF (WDD4515), AND (1) VERTICAL DIVIDER (WDD4507). INSERT STEEL DOWEL NUTS INTO 10 MM HOLES IN TOP SHELF (WDD4515) AND ATTACH VERTICAL DIVIDER (WDD4507) USING (2 TOTAL) 1/4"-20 X 1.772" SCREWS. (SEE INSET DETAIL ONE & INSET DETAIL TWO). NOTE: MAKE SURE TO ORIENTATE PARTS EXACTLY AS THEY ARE SHOWN IN DETAIL ONE.

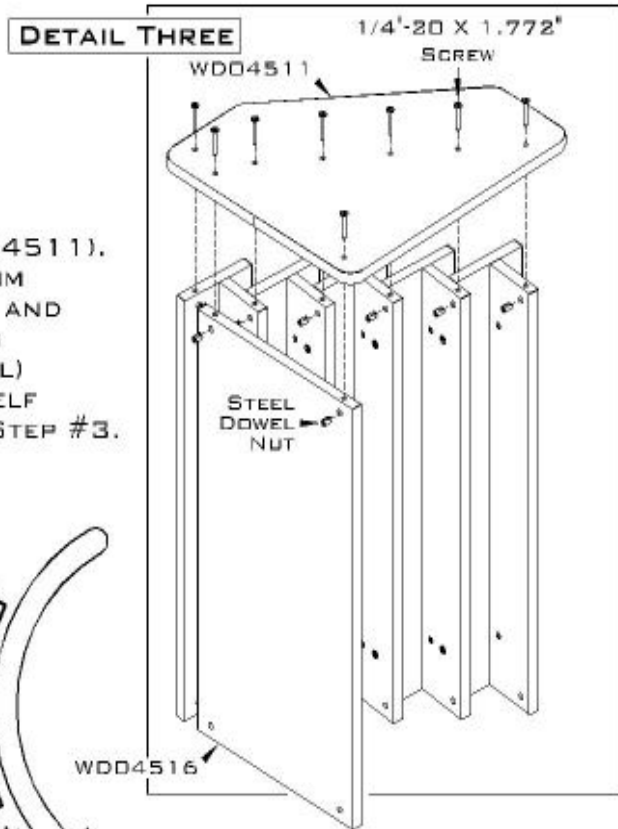


**STEP #3** - TAKE ASSEMBLY FROM STEP #2 AND LOCATE (3) VERTICAL DIVIDERS (WDD4507), (4) SHELF (WDD4513), AND (1) VERTICAL DIVIDER (WDD4514). INSERT STEEL BARREL NUTS INTO 10 MM HOLES (16 TOTAL) AS SHOWN IN DETAIL TWO AND ASSEMBLE USING 1/4"-20 X 1.772" SCREWS (16 TOTAL).

**NOTE: ASSURE THAT ALL PARTS ARE FLUSH WHEN TIGHTENING.**



**STEP #4** - LOCATE BOTTOM SHELF (WDD4516) AND RIGHT SIDE (WDD4511), INSERT STEEL DOWEL NUTS IN 10 MM HOLES IN ASSEMBLY FROM STEP #3 AND BOTTOM SHELF (WDD4516). USING 1/4"-20 X 1.772" SCREWS (8 TOTAL) ATTACH RIGHT SIDE TO BOTTOM SHELF (WDD4516) AND ASSEMBLY FROM STEP #3. (SEE DETAIL THREE)



**STEP #5** - CAREFULLY FLIP UNIT OVER TO RIGHT SIDE. LOCATE LEFT SIDE (WDD4512), INSERT ALL STEEL DOWEL NUTS IN REMAINING 10 MM HOLES AND ATTACH USING 1/4"-20 X 1.772" SCREWS (8 TOTAL). (SEE DETAIL FOUR)

