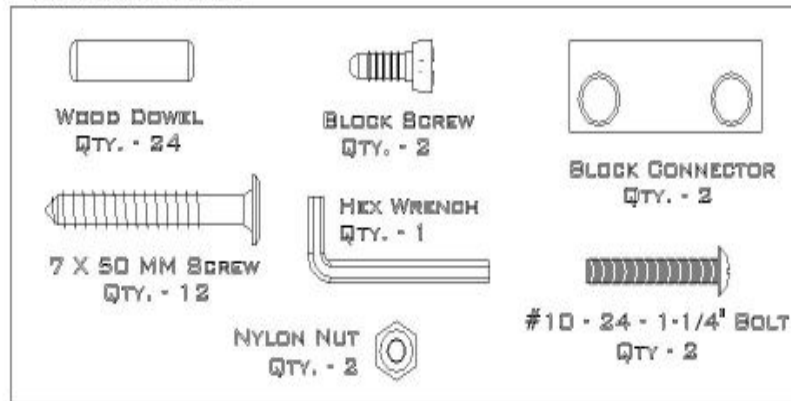


benee's Storage Unit - Model # KD0121 & KD0122

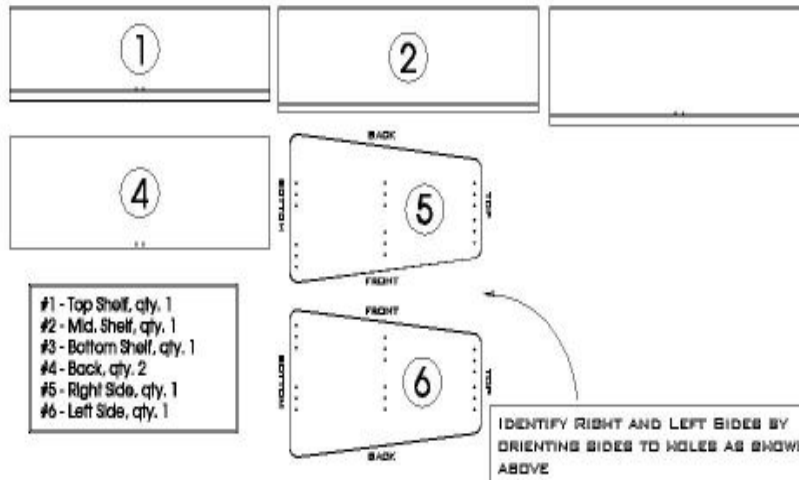
HARDWARE / TOOLS



TOOL REQUIRED: PHILLIPS SCREWDRIVER & POSSIBLE RUBBER MALLET (NOT SUPPLIED)

NOTE: DO NOT USE A POWER SCREWDRIVER OR A POWER DRILL TO TIGHTEN SCREWS

PIECES ENCLOSED:



INSPECT ALL PARTS FOR FREIGHT DAMAGE. IF DAMAGE IS DISCOVERED, AND IT WAS NOT NOTED ON THE BILL OF LADING AT THE TIME OF DELIVERY, PLEASE CALL **benee's** AT 1-800-854-1411.



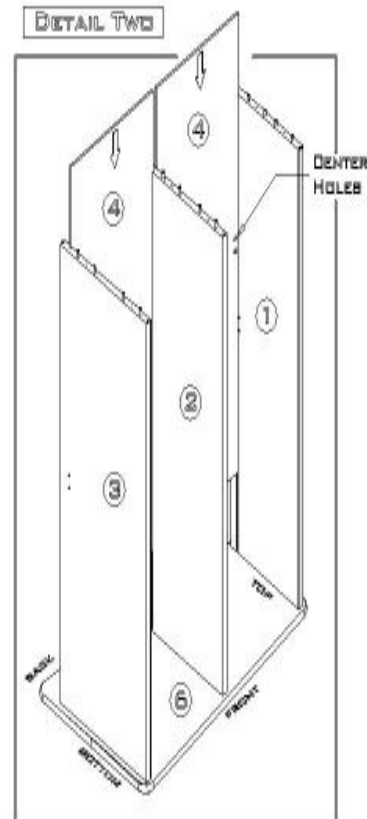
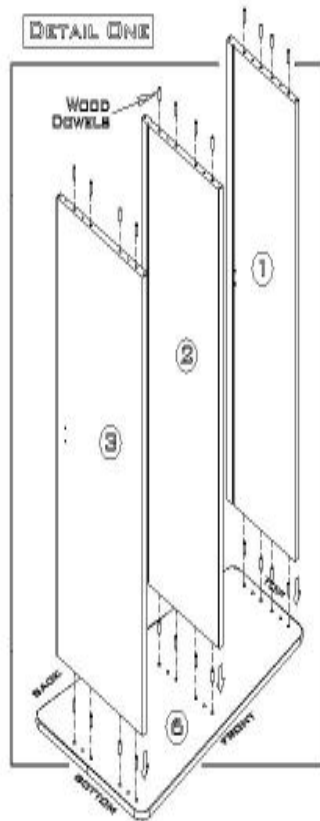
benee's

1602 APPAHY DRIVE • FARRINGTON, MISSOURI 63412
PHONE: 1-800-854-1411 / FAX: (314) 756-2266
WEB SITE: WWW.BENEES.COM / EMAIL: INFO@BENEES.COM

STEP #1 - LAYOUT ALL PARTS AND HARDWARE TO INSURE EVERYTHING HAS BEEN INCLUDED AND THAT YOU ARE FAMILIAR WITH THE COMPONENTS.

**STEP #2 - PUSH ALL WOOD DOWELS (24 TOTAL) INTO BOTH ENDS OF TOP SHELF (#1), MIDDLE SHELF (#2), BOTTOM SHELF (#3)
(SEE DETAIL ONE)**

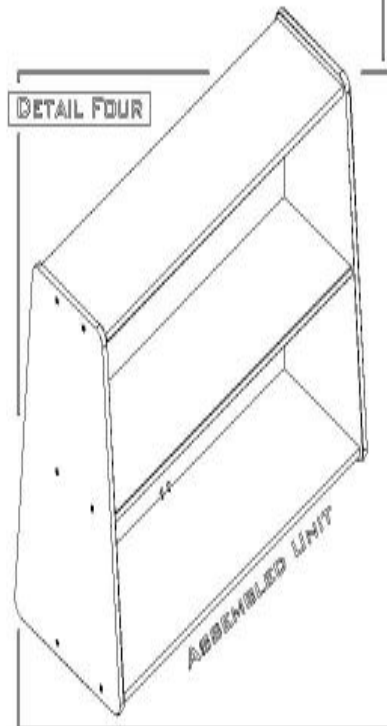
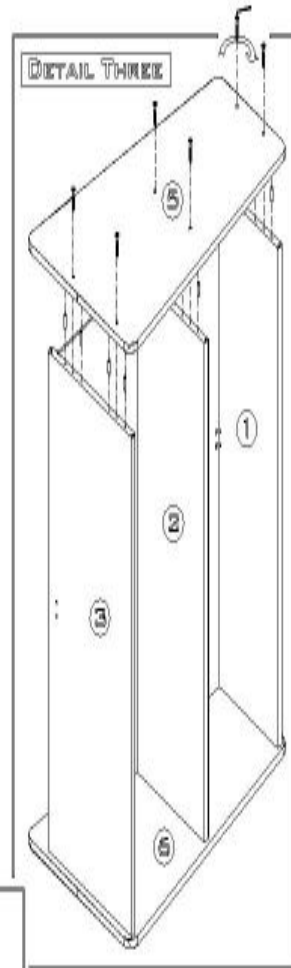
**STEP #3 - LAY RIGHT SIDE (#6) FLAT. INSERT TOP SHELF (#1), MIDDLE SHELF (#2) AND BOTTOM SHELF (#3) INTO RIGHT SIDE, (#6). INSURE THAT THE GROOVE IN TOP SHELF (#1) IS FACED TOWARD BOTTOM AND THE GROOVE IN BOTTOM SHELF (#3) IS FACED TOWARD THE TOP.
(SEE DETAIL ONE)**



STEP #4 - SLIDE BACKS (#4) INTO GROOVES IN TOP SHELF (#1) AND MIDDLE SHELF (#2) AND BOTTOM SHELF (#3) AND MIDDLE SHELF (#2)

**INSURE THE TWO CENTER HOLES IN THE TOP BACK (#4) ARE ON THE 'TOP' AND THE CENTER HOLES IN THE BOTTOM BACK (#4) ARE ON THE 'BOTTOM'.
(SEE DETAIL TWO)**

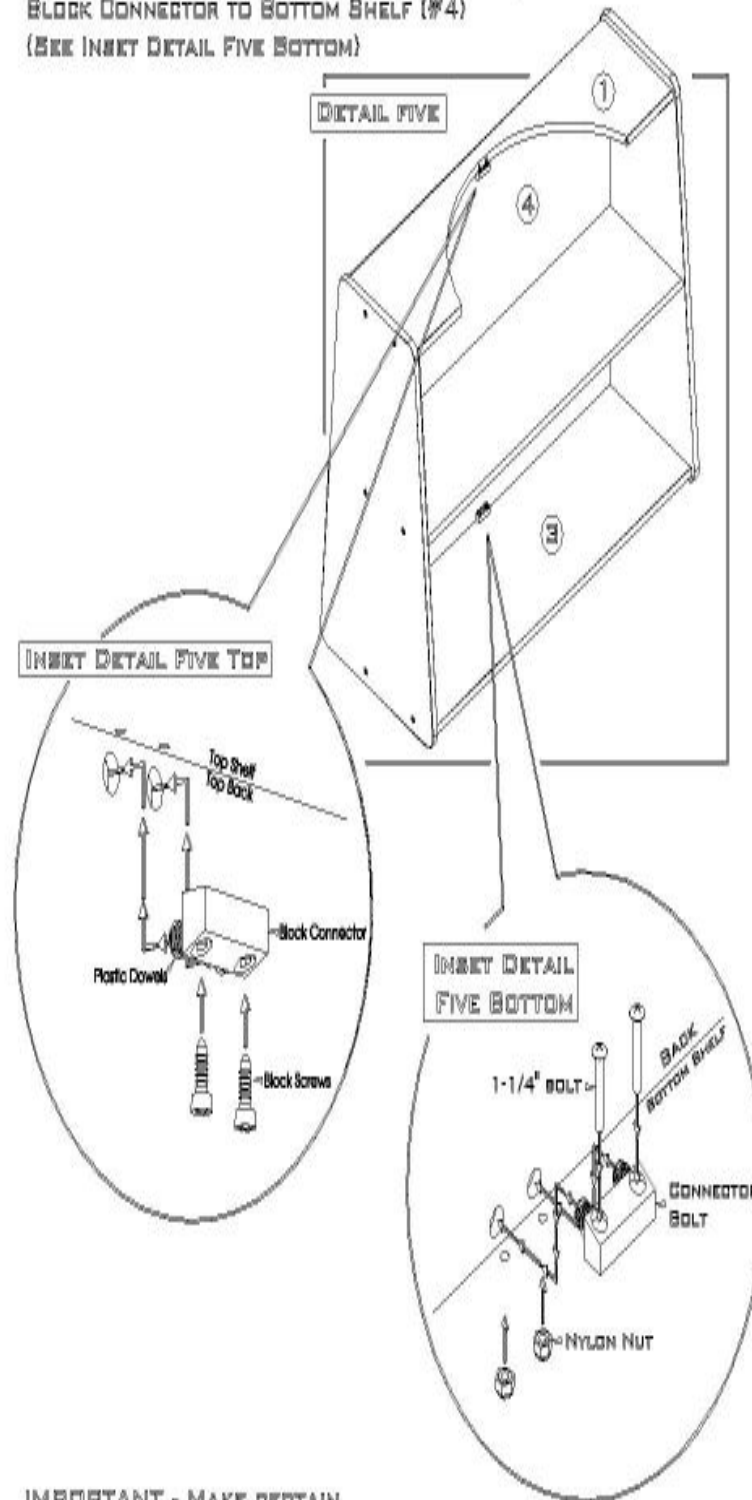
STEP #5 - PLACE LEFT SIDE (#5) IN POSITION, USE RUBBER Mallet IF NECESSARY, SECURE USING (6) 7 x 50 MM SCREWS USING HEX WRENCH PROVIDED. (SEE DETAIL THREE)



STEP #6 - PLACE UNIT IN AN UPRIGHT POSITION AND SECURE RIGHT SIDE (#6) WITH (6) 7 x 50MM SCREWS USING HEX WRENCH PROVIDED. (REFER TO DETAIL THREE)

IMPORTANT - MAKE CERTAIN ALL SCREWS ARE TIGHT.

STEP #7 - PUSH THE TWO PLASTIC DOWELS ON EACH BLOCK CONNECTOR INTO THE TWO HOLES IN THE TOP BACK (#4) AND BOTTOM BACK (#4) (2 TOTAL). INSERT BLOCK SCREWS (2 TOTAL) INTO BLOCK CONNECTOR AND TIGHTEN TO TOP SHELF (#1) (SEE INSET DETAIL FIVE TOP) USING TWO 1-1/4" BOLTS AND TWO NYLON NUTS, ATTACH THE BOTTOM BLOCK CONNECTOR TO BOTTOM SHELF (#4) (SEE INSET DETAIL FIVE BOTTOM)

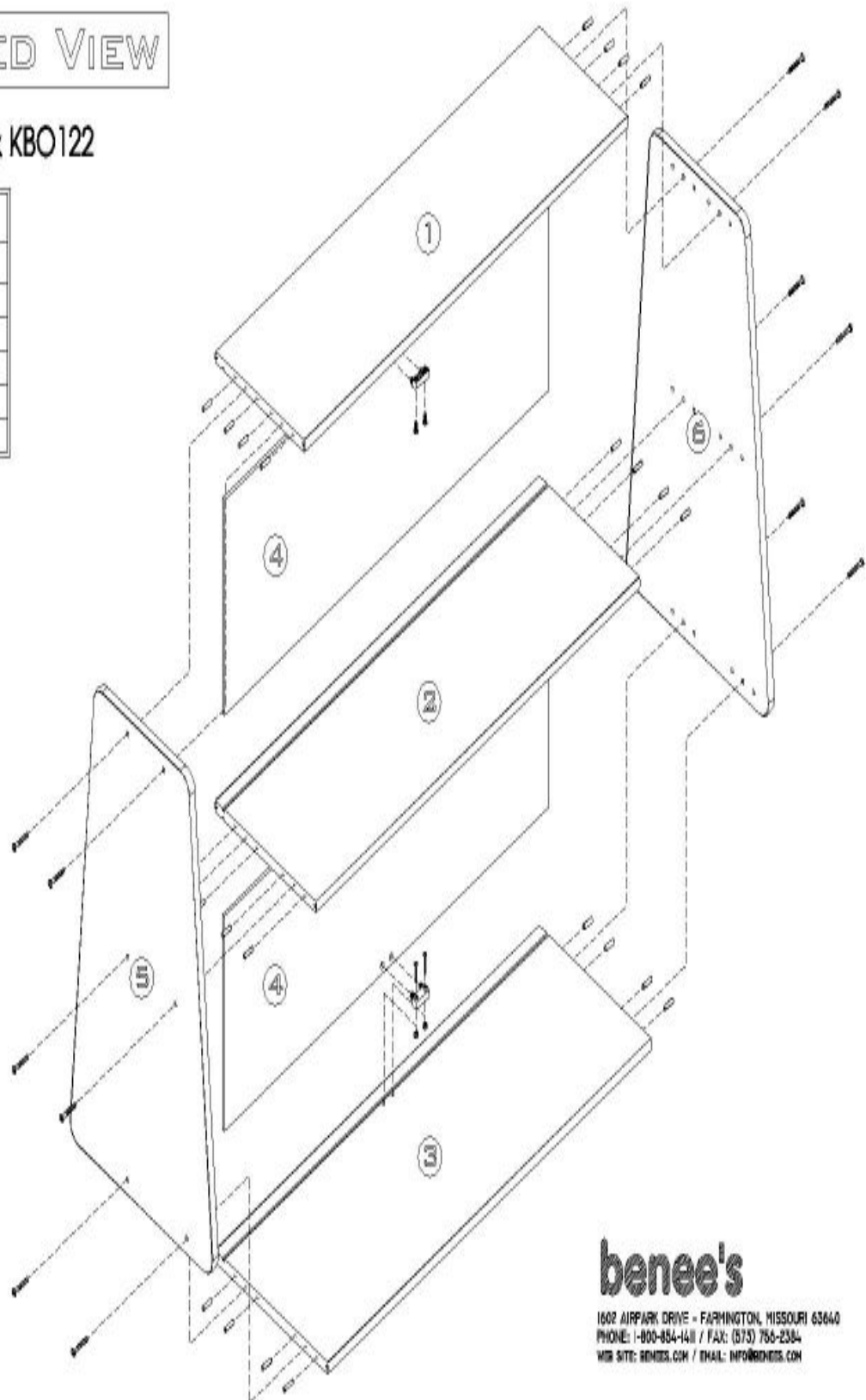


IMPORTANT - MAKE CERTAIN ALL SCREWS ARE TIGHT.

EXPLODED VIEW

Model # KD0121 & KBO122

REF#	DESCRIPTION
1	TOP SHELF
2	MIDDLE SHELF
3	BOITTOM SHELF
4	BACK
5	LEFT SIDE
6	RIGHT SIDE



benee's

1602 AIRPARK DRIVE - FARMINGTON, MISSOURI 63640
PHONE: 1-800-854-1411 / FAX: (313) 756-2334
WEB SITE: BENEES.COM / EMAIL: INFO@BENEES.COM